

Referendum Review November 2022

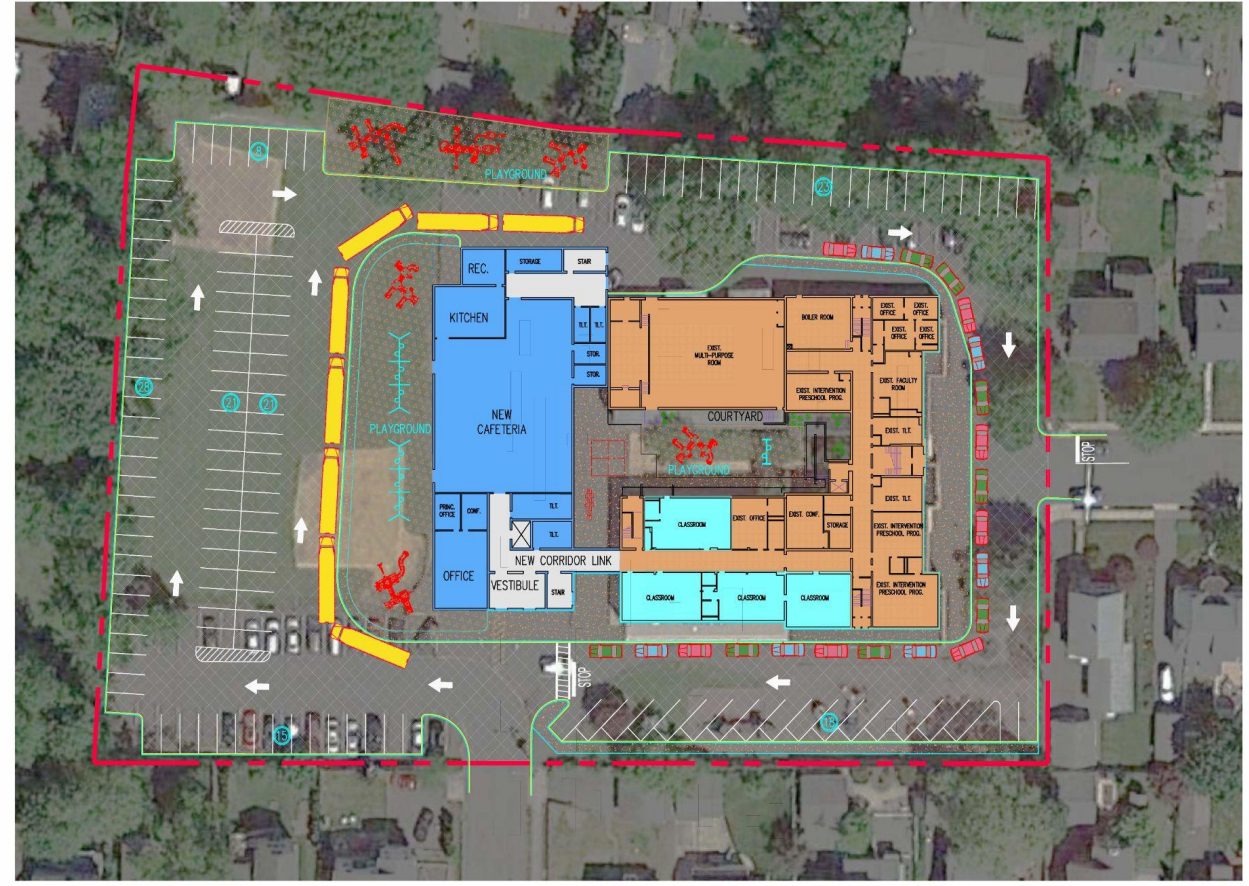


How the Process Began

- 2017: Pre-planning
- 2019-2022: The collaborative process
- Priorities: Shared by parents, students, staff, administration, public
- Identified: Areas of concern with each building

Moss School (1925)

1st Floor
New and
existing
spaces
(classrooms above)



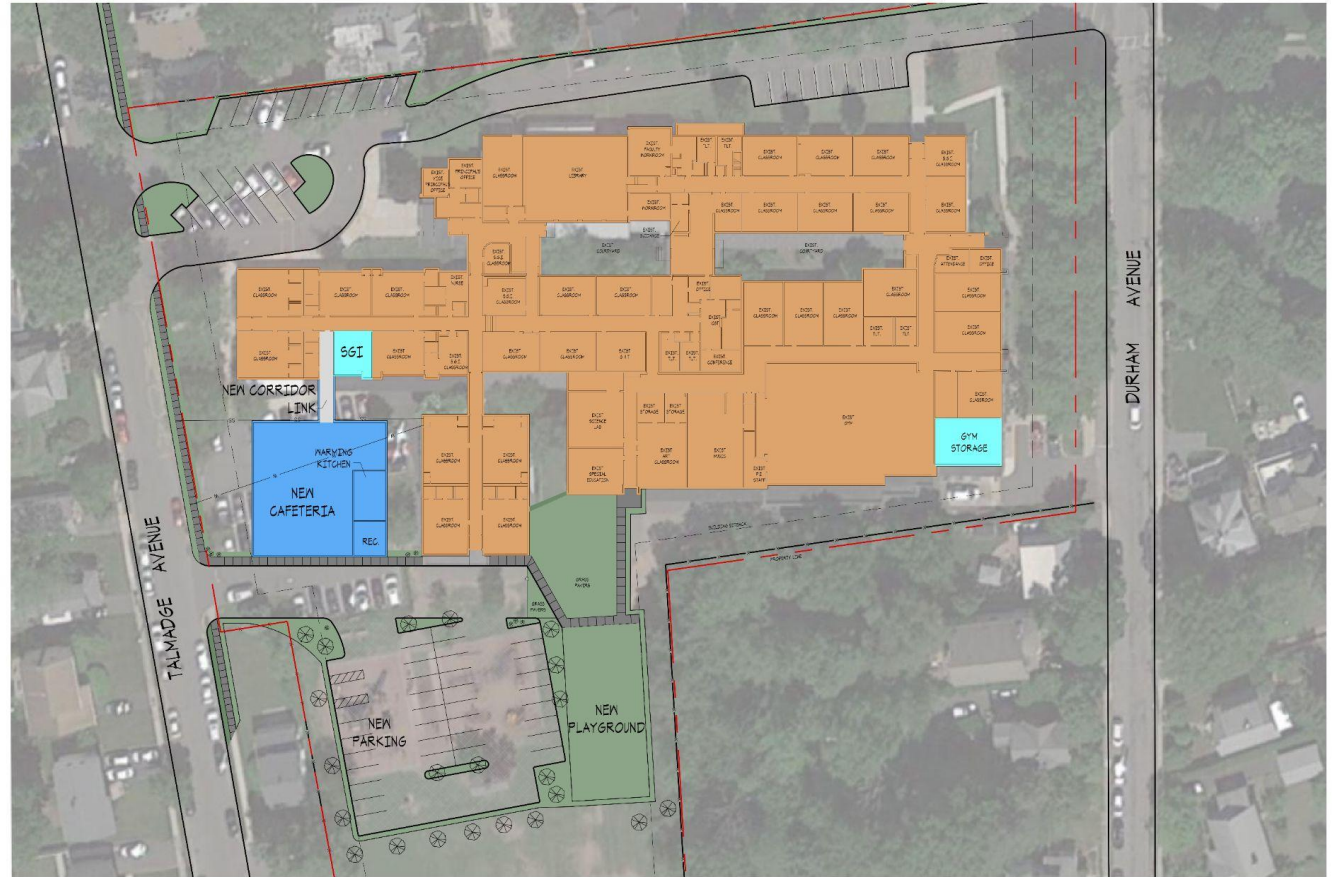
- NEW CONSTRUCTION
- ALTERATIONS
- EXISTING
- NEW CIRCULATION

MOSS ELEMENTARY SCHOOL
THE METUCHEN PUBLIC SCHOOL DISTRICT

PROPOSED FIRST FLOOR PLAN
SCALE: 1/16" = 1'-0"

Campbell School (1951)

New and
existing
spaces



- NEW CONSTRUCTION
- ALTERATIONS
- EXISTING
- NEW CIRCULATION

CAMPBELL ELEMENTARY SCHOOL

THE METLKEN PUBLIC SCHOOL DISTRICT

PROPOSED FIRST FLOOR PLAN

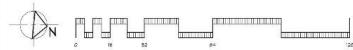
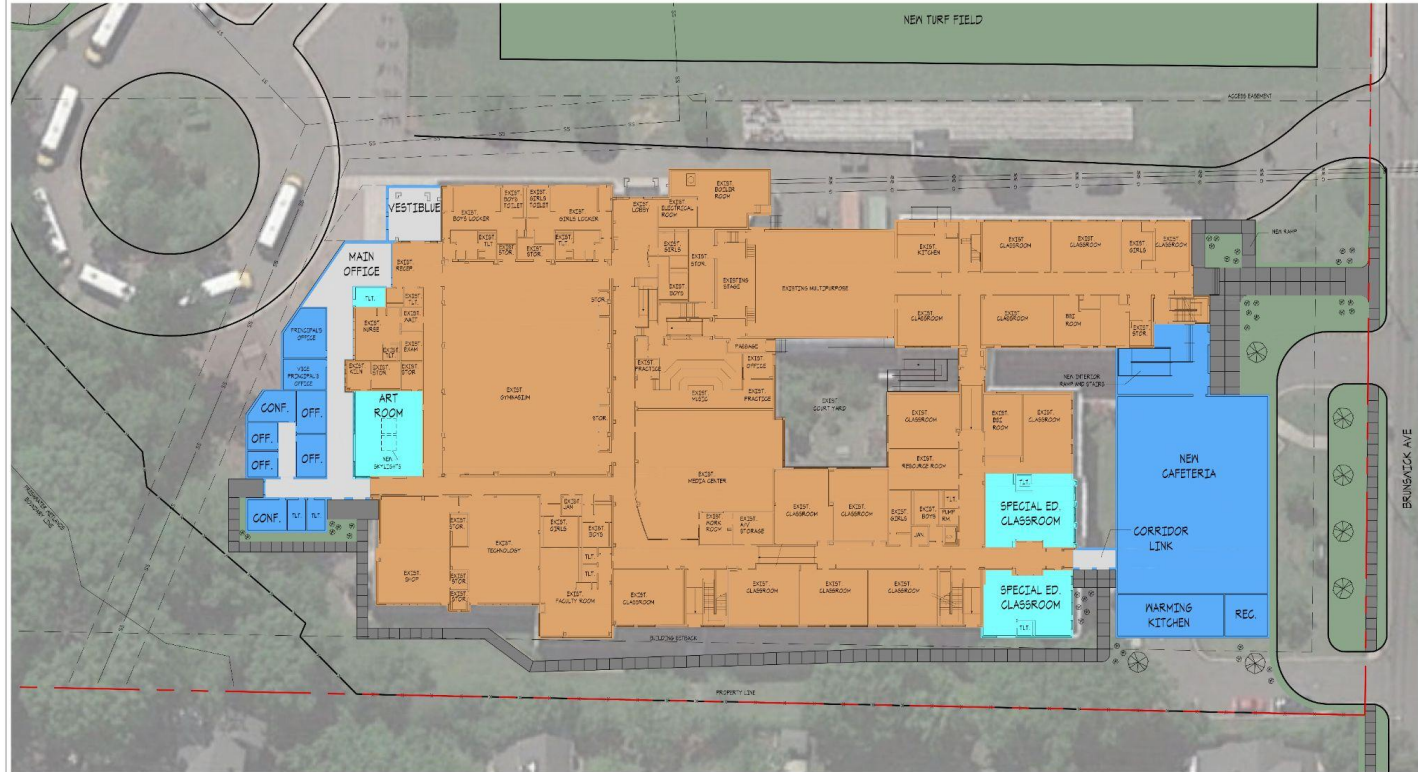
SCALE: 1/32" = 1'-0"

EET
ASSOCIATES

NOVEMBER 2019

Edgar School (1948)

New and existing spaces



EDGAR MIDDLE SCHOOL
THE METROPOLITAN PUBLIC SCHOOL DISTRICT

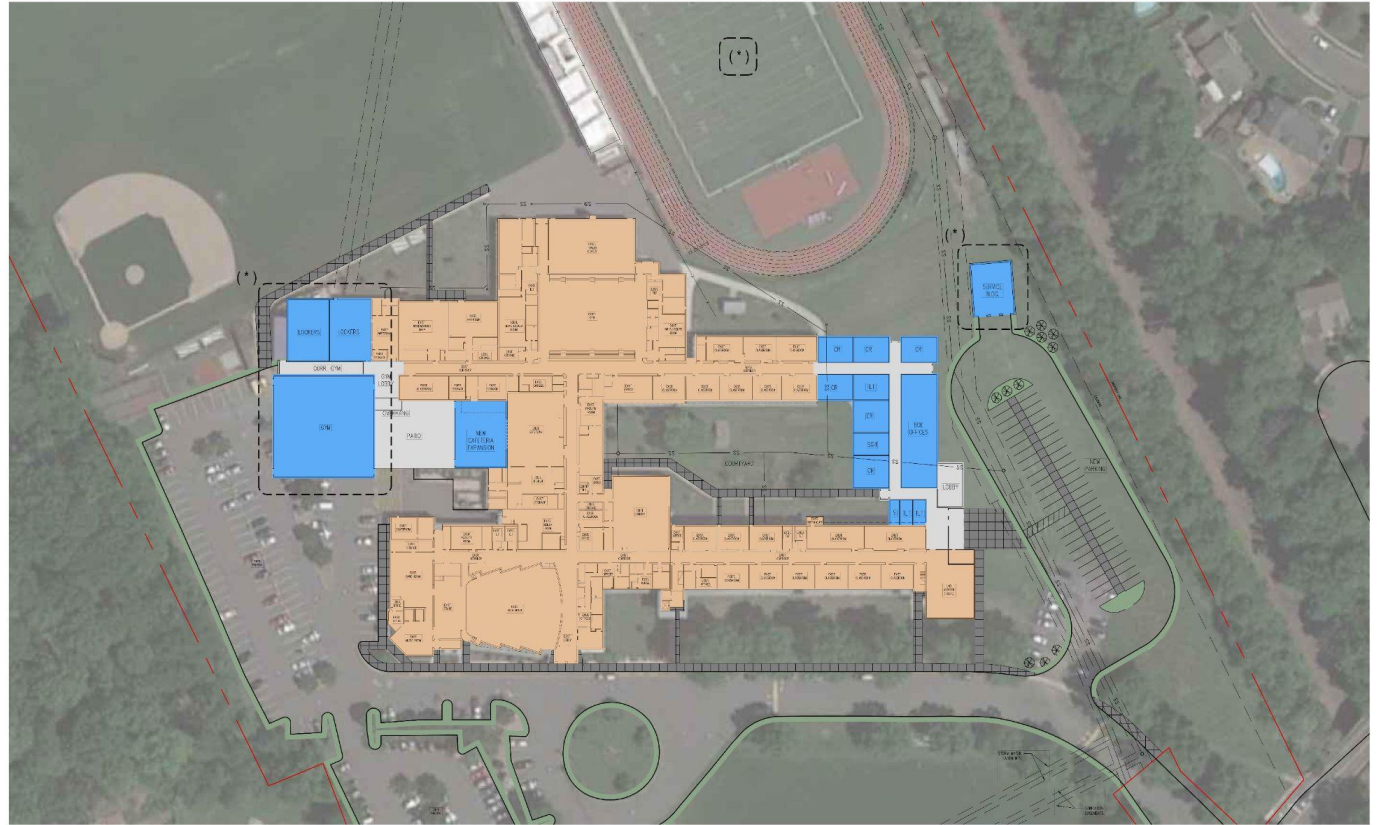
NEW CONSTRUCTION ALTERATIONS EXISTING NEW CIRCULATION

PROPOSED FIRST FLOOR PLAN

SCALE: 1/8" = 1'-0"

Metuchen High School (1956)

New and existing spaces



NEW CONSTRUCTION ALTERATIONS EXISTING NEW CIRCULATION

METUCHEN HIGH SCHOOL

TOWNSHIP OF METUCHEN, NEW JERSEY

PROPOSED FIRST FLOOR PLAN (* SECOND QUESTION: GYM/LOCKER RM. ADDITION, AND TURF REPLACEMENT)

SCALE 1/32" = 1'-0"

EI
ASSOCIATES

JUNE 2021

Question 1: Infrastructure

All of the structural additions, changes, and upgrades, except for the 2nd MHS Gym and returned field.

**Goal: Health and safety, alleviate overcrowding, improve educational opportunities, address structural concerns*

Question 2: Operations

Grade realignment, additional staff for Moss School, and energy costs for example.

**Questions 1 and 2 must pass, otherwise nothing from Question 1 will get completed. Why? The district would not build new spaces if we cannot hire staff for new spaces.*

Question 3:

A New 2nd Gym and replacement turf on the field at MHS.

**This question can only pass if Question 1 and 2 pass. Why? Because this question is important for athletic equity, scheduling, and for needed maintenance issues, but some may feel that it is not as high of a priority as preventing overcrowding.*

If this question fails, Questions 1 and 2 could pass.

Benefits of Additional Space

- Dedicated classrooms for specials
- Developmentally appropriate grade alignment
(PK-2, 3-5, 6-8, 9-12)
- Opportunities for smaller classes and new course offerings
- Improved lunch times, recess opportunities, and physical education
- Potential for more educational time

Benefits of Additional Space

- Small group instruction space
- Dedicated library and music space
- Space for the Child Study Team
- Potential for new scheduling options
- New locations for special programs such as peer leadership
- Meeting spaces for parents, staff and students
- Community space for weekend and night activities

Frequently Asked Questions

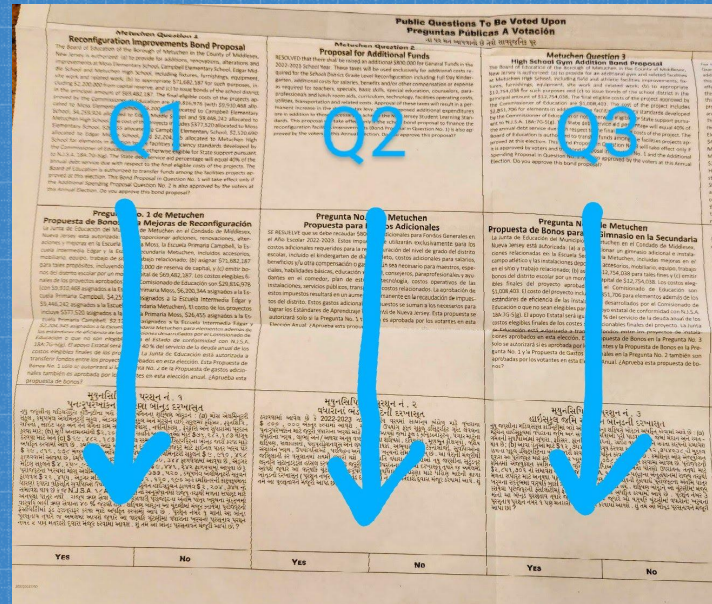
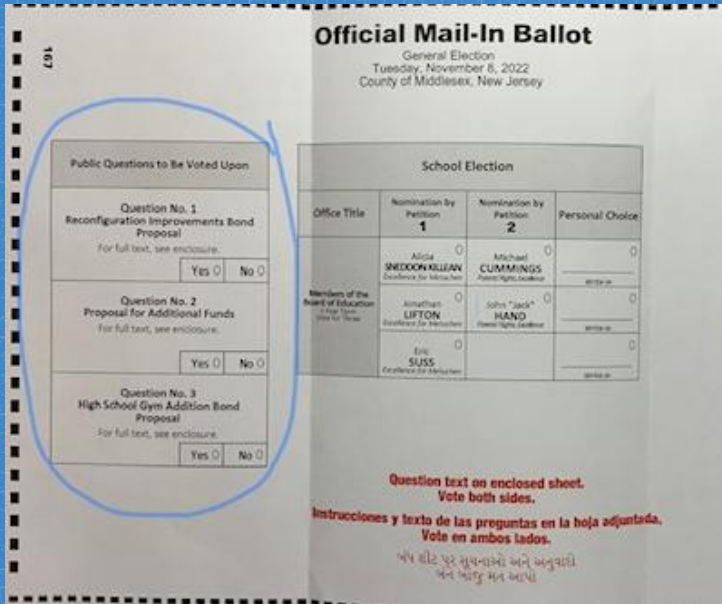
- **What about the old bonds?** Old bonds are due in 2024 and 2027. That timing minimizes the tax impact of this referendum
- **I don't have children in the schools. Why should I support this?** There is a correlation between school expenditures and home values. Schools provide space for the community for the arts, athletics and in emergencies
- **Why can't I vote for just one school plan I like and not the others?** The plans are interconnected and are designed to benefit all of the students and all of the schools in our borough. It alleviates overcrowding and plans for the future.
- **How much would my taxes go up?** On average, your taxes would go up \$395 per year (or \$270 without Question 3). There are years it would be higher and years it would be lower.

Frequently Asked Questions

- **When would construction start and end?** Construction would most likely start in the summer of 2023 and take 2-3 years to complete in phases, to minimize the impact on students.
- **Why do you need to fix the roofs and improve the HVAC?** Roofs have an expected “end of life.” We repair, patch, and replace roofs as needed to prevent further issues such as mold. We understand the importance of good air quality. One of our buildings is nearing 100 years old, and most are close to 70 years old. Regular maintenance is required to keep our buildings in good shape.
- **Where can I see the referendum plans, tax calculator, and how to vote?**
[Metuchenschools.org](https://www.metuchenschools.org)
- **What about inflation?** The board added 6.5% to the overall costs at the recommendation of professionals, in addition to 10% for overages that are typically part of school construction projects.

Frequently Asked Questions

What will the questions look like on the ballot?



The election is November 8th, but early in-person voting and mail in voting starts now!

Why Now?

This is a rare opportunity for us to improve our schools and to improve the experience for an entire generation of Metuchen students.

This process has taken 5 years. Capacity issues and educational improvements, and health and safety concerns should not any longer.

The vote is yours. However you vote, please consider the impact that your vote has on the lives of our students, staff, and our entire borough.