



THE JOURNEY IN OUR SHOES

MHS SCHOOL LEADERSHIP TEAM OVERVIEW

Ed Porowski & Bill Schlavis, SLT Co-Chairs
November 15, 2022

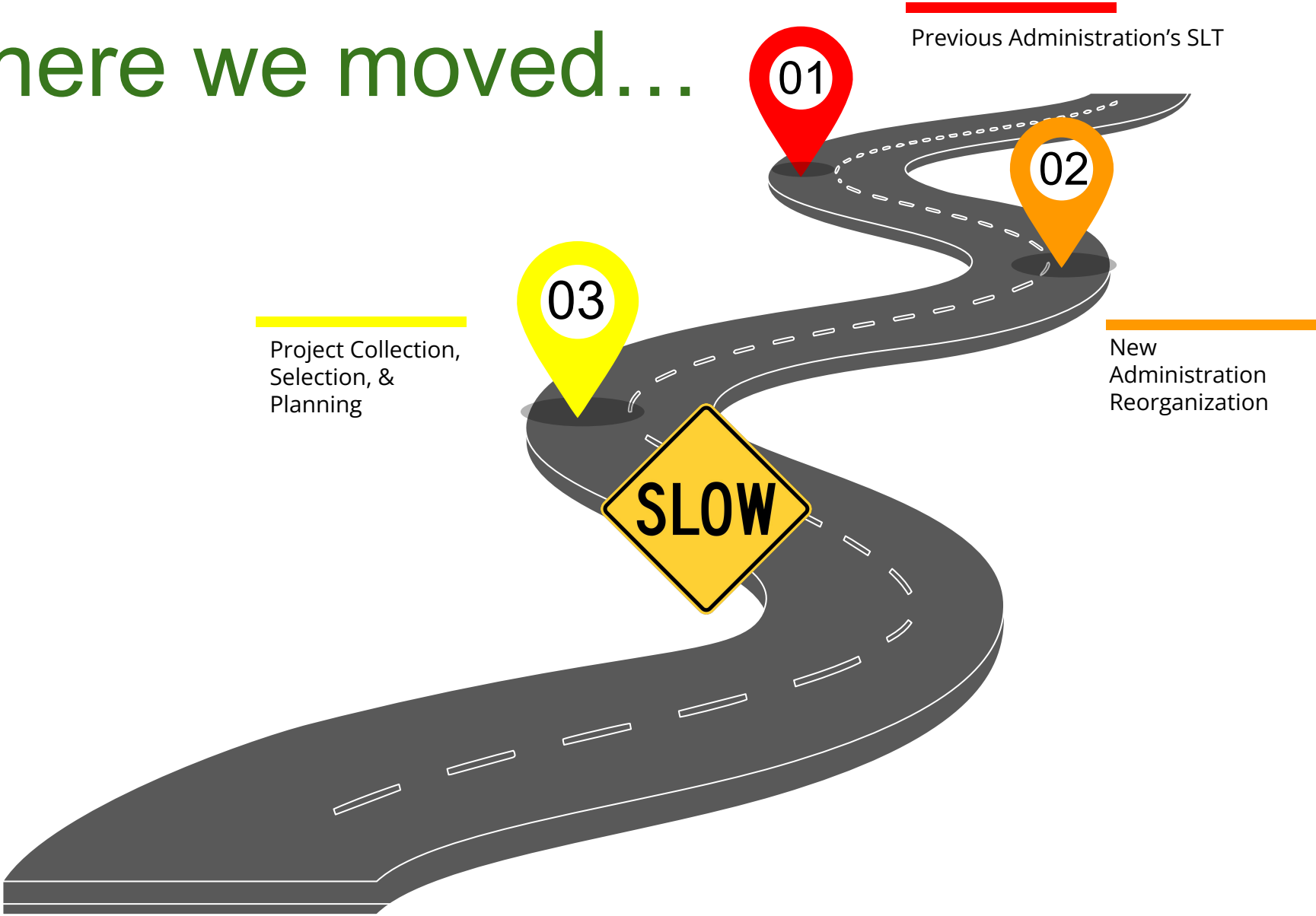
Where we were...



The Metuchen High School SLT Core Membership



Where we moved...



Reflecting on Survey Results



NJ School Climate Improvement Survey

GLOWS	GROWS
<p>Staff support for students</p> <p>Student participation and opportunities to participate in athletics, extra- & co-curricular activities</p> <p>High expectations for students</p> <p>Prosocial student interpersonal behaviors</p>	<p>Facilitate positive student interpersonal behaviors:</p> <ul style="list-style-type: none">→ Respectful discussion of differing points of view→ Promote inclusive behaviors→ Addressing appropriate verbal & written communication <p>Instruction on strategies for students to express feelings</p>

Rutgers Labor Management Collaboration & Climate Survey

GLOWS	GROWS
<p>Teachers have the latitude to make classroom-level decisions independently</p> <p>Teachers and faculty members work towards common goals</p>	<p>Increase opportunities for collaboration among teachers and faculty members</p>

Where we moved...





Thank you for your support.